

City of Glen Elder
213 S. Market, P.O. Box 55
Glen Elder, KS 67446
Phone 785-545-3322 / Fax 785-545-3342
Official web site: www.glenelder.com

Dear Property Owner:

The Flood Insurance Rate Maps (FIRMs) and Flood Insurance Study (FIS) for some areas of Mitchell County are being updated to provide more accurate information regarding your property's flood risk. The Kansas Dept. of Agriculture - Division of Water Resources (DWR), in collaboration with the Federal Emergency Management Agency (FEMA) has worked with local community officials to conduct community review. This project has been through multiple reviews and the draft floodplains are now ready for public review.

The draft map is now available for public review and comment. You received this letter because your property has been identified as being affected by the floodplain map. The boundaries of flood-prone areas within the city have changed. You can review and submit comments by visiting the web review map at http://gis2.kda.ks.gov/gis/lower_solomon_saline/. The web review map has an address search function. You are also invited to attend a public open house to review the proposed floodplain map or to have questions answered.

Public Open House
Wednesday, July 21, 2021
2:00 p.m. to 6:30 p.m.
Beloit Municipal Building: Sutter Room (in the basement)
119 N. Hersey
Beloit, KS

Officials from the DWR, engineering contractor Wood Environment & Infrastructure and Mitchell County will be on hand at the open house to answer your questions and take any comments you may have. Computer workstations will be available to show you draft mapping as it pertains to your property.

We hope to see you in Beloit on July 21.

Jerri Senger
City Clerk

June 3, 2021

RE: Mitchell County, KS Community Review Resolution

Dear City of Glen Elder Stakeholder:

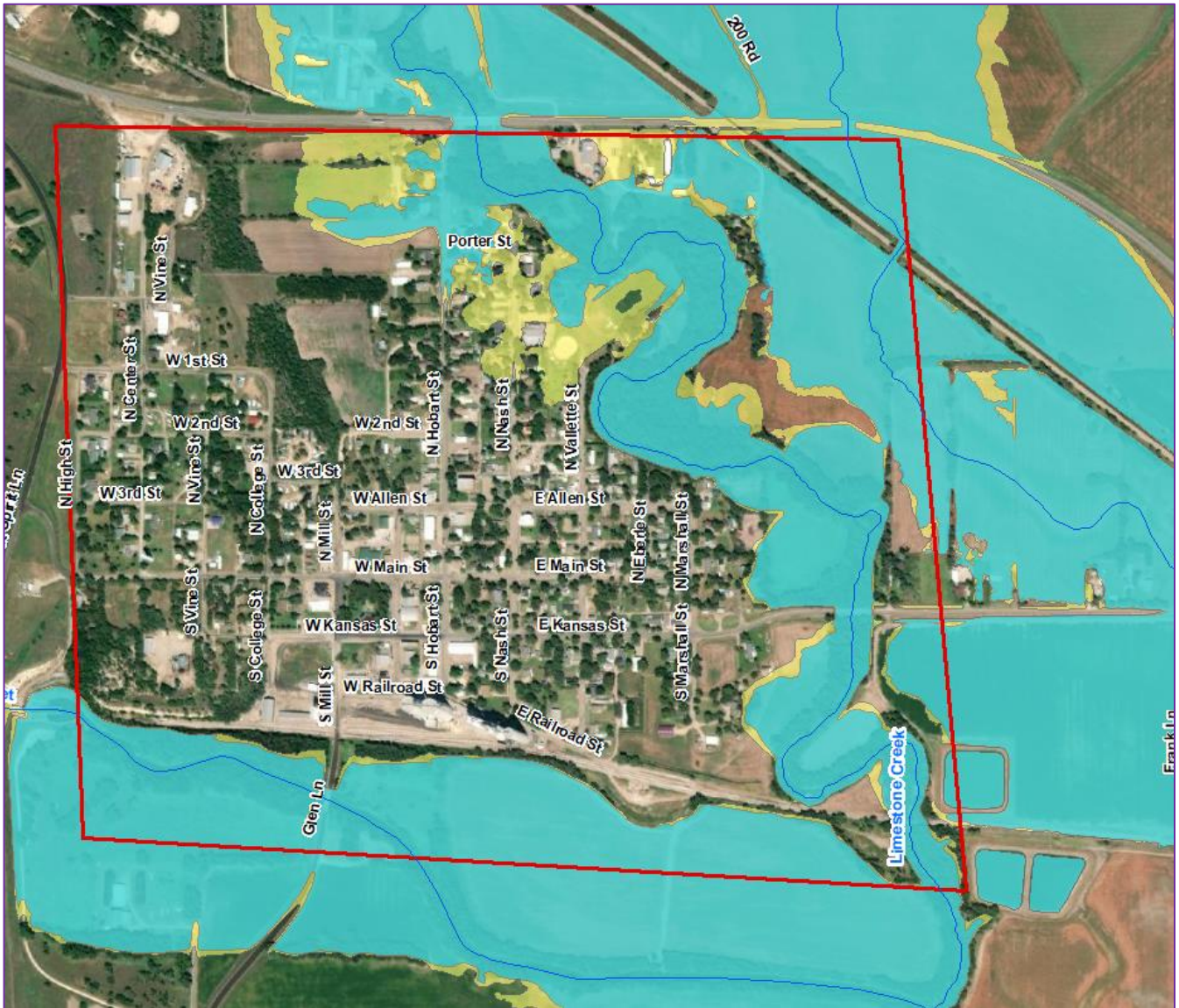
The Flood Risk Review (FRR) meeting for Mitchell County was held on January 6, 2021, where we discussed the draft flood hazard data and asked for your community to review and comment. Comments were made on the KDA-hosted web viewer for this project. Comments were also received via email. Wood Environment and Infrastructure Solutions, Inc (Wood E&IS) has reviewed and resolved the comments provided. Comment-specific responses are detailed below.

Comment #1: The draft floodplains in Glen Elder seem too large when compared to the flood extents during the 1993 flood event. The area should be re-evaluated. Photos from the 1993 flood event were provided on February 4, 2021 via email.




Resolution: *Changes have been made to the floodplains in and near Glen Elder.* The modeling for Limestone Creek and the Solomon River has been re-evaluated and modifications have been made. The outflow hydrograph of Glen Elder Reservoir has been modified to more accurately reflect the timing of releases in relation to the peak flows in the receiving stream, based on historical flood events. In addition, the manning's n roughness coefficients were adjusted for Limestone Creek, along with the Curve Numbers in the Limestone Creek watershed. This reduced the flows in Limestone Creek. The 1993 storm event was similar in size to a 1% annual chance event, which corresponds to the Zone A floodplains. Based on the photos, US Highway 24 did not overtop during the 1993 event. The updated draft floodplains also reflect this. Based on the documentation received, water did not get into the yard or close to the barn or house at 400 N Nash Street. The updated draft floodplains now reflect this. Figure 1 shows a comparison of the previous draft floodplains presented at the Flood Risk Review meeting and the updated draft floodplains following the changes that were made.



Figure 1: Previous and Updated Draft Floodplains in Glen Elder



Key

-  Comment Location
-  Updated Zone A Floodplains
-  Previous Zone A Floodplains



The draft data was provided and presented to communities to address as many concerns as possible before it is presented to the public for review and comment. The draft data can be seen on the Mitchell County Web Map located at https://gis2.kda.ks.gov/gis/lower_solomon_saline/. A further opportunity to comment will be provided during the Public Review period, which includes the Public Open House, which is expected to be July 21, 2021. If our responses do not adequately address your comment or you have further comments, please provide further comments by the end of the Public Review period, which you will receive further notification about. Both community and public review occur before the preliminary date and before the draft maps are distributed as a preliminary map.

We appreciate you taking the time to review and provide feedback on the map now because it will ease the process as we go forward and will ultimately make a better map for your community to use. Once the maps are preliminary, a final opportunity to provide comments will occur during the 90-day appeal period, which will be set after the maps go preliminary.

If you have questions about the project or the process moving forward, please contact Tara Lanzrath, Floodplain Mapping Coordinator, at 785-296-2513 or by email at tara.lanzrath@ks.gov. If you have any questions or concerns about any of the comment resolutions, please contact Maria Neeland at 785-414-3127 or by email at maria.neeland@woodplc.com.

Sincerely,



Maria S. Neeland., P.E., C.F.M

Wood Environment & Infrastructure Solutions, Inc.

cc: Tara Lanzrath, Floodplain Mapping Coordinator, KDA



Mitchell County Floodplain Mapping Open House Public Information Sheet 2:00 to 6:30 pm, July 21, 2021

General Information

Thank you for taking the time to understand floodplain mapping changes that are underway in Mitchell County and how those changes affect you. It is important to note that this mapping is not yet regulatory, but in some cases may be usable as best available data. The mapping is currently in Draft, and we anticipate issuing Preliminary maps around December 2021 with the maps likely becoming effective early 2023. While the maps are in Draft, an informal public comment period has been initiated. Please submit any comments to your Floodplain Administrator or the State Floodplain Mapping Coordinator (flip sheet over for contact information) by **August 21, 2021**. Your community will then compile these comments and send them to the State for review.

Where can I go to find out more?

- Search your address and view how the floodplains affect your property:

https://gis2.kda.ks.gov/gis/lower_solomon_saline/

- Learn more about this floodplain mapping project:

<https://agriculture.ks.gov/divisions-programs/dwr/floodplain/mapping/mapping-projects/lists/mapping-projects/lower-solomon-saline>

- Believe you have been incorrectly identified as in the Special Flood Hazard Area? You can learn more about the Letter of Map Change (LOMC) process by visiting the site below. LOMC applications to revise this draft mapping will need to wait until they are the effective regulatory mapping.

<https://www.fema.gov/letter-map-changes>

- In areas where the effective map does not have published Base Flood Elevations (BFEs), this draft mapping can be used as best available data in LOMC applications. Request a BFE at:

http://maps.kgs.ku.edu/fpm_bfe/home.cfm

- Learn more about flood insurance and the National Flood Insurance Program:

<https://www.fema.gov/national-flood-insurance-program>

- Need a surveyor?

www.ksls.com

Still have questions? Contact your local Floodplain Administrator. Flip sheet over for contact information.



Open House Location

Beloit Municipal Building: Sutter Room
119 N Hershey, Beloit, KS

Contact Information

City of Beloit

Jason Rabe
City Manager
785-738-3553
jrabe@beloitks.org

Doug Langham
Code Enforcement Officer
785-738-3553
dlangham@beloitks.org

City of Glen Elder

Jerri Senger
City Clerk
785-545-3322
glcity@nckcn.com

City of Tipton

Joanne Brummer
City Clerk
785-373-5435
clerk@tiptonkansas

City of Cawker City

Denelle Mick
City Clerk
785-781-4713
cawcty@nckcn.com

City of Hunter

Machelle Wiles
Mayor
785-529-2515
cityofhunter@wilsoncom.us

Mitchell County

David Dohe
Emergency Management Director
785-738-3652
ddohe@mitchellcountyks.gov

Kansas Department of Agriculture Division of Water Resources

Tara Lanzrath, CFM
Floodplain Mapping Coordinator
(785) 296-2513
Tara.Lanzrath@ks.gov

Joanna Rohlf, CFM, GISP
Floodplain Mapping Specialist
(785) 296-7769
Joanna.rohlf@ks.gov

Steve Samuelson, CFM
State NFIP Coordinator
(785) 296-4622
steve.samuelson@ks.gov

William Pace, CFM
Floodplain Mapping Specialist
(785) 296-5440
William.Pace@ks.gov

Cheyenne Sun Eagle
NFIP Specialist
(785) 296-0854
Cheyenne.suneagle@ks.gov

